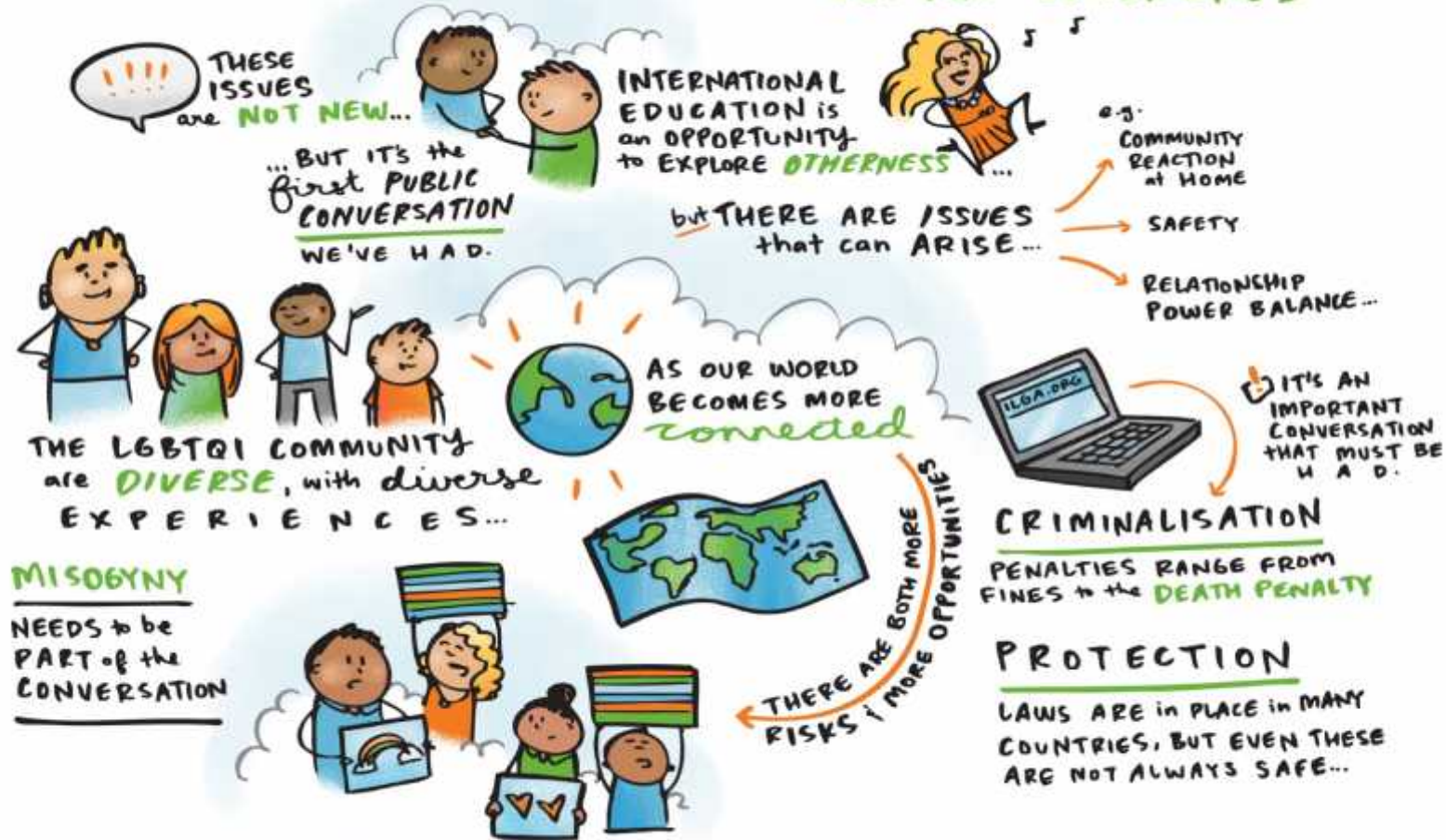


# DON'T ASK, DON'T TELL? INTERNATIONAL EDUCATION and the LGBTQI EXPERIENCE



IT'S A collective EXPERIENCE. TOLERANCE OF COMPLEXITY & MESS

THERE IS NO "ONE SIZE FITS ALL" RESPONSE FOR STUDENTS!

BEING LGBTQI AFFECTS your EXPERIENCE OF LIFE

WHERE the RESEARCH for INTERNATIONAL STUDENTS

WHAT ASSUMPTIONS ARE WE MAKING?

WHAT are WE MISSING?

INSTITUTIONS

ARE WE DOING enough? THESE ARE PEOPLE'S LIVES.

WE NEED MORE RESEARCH... TO TALK ABOUT IT more... AND RECOGNISE INTERSECTIONALITY. NO ISSUES ARE IN ISOLATION...

SURVEY 46 PEOPLE AGE: MOSTLY 22-25

I WASN'T GAY AT ALL UNTIL I MET MY GIRLFRIEND

NATIONALITY: BROAD RANGE (EXCEPTION OF INDIA)

WHERE: REFLECT STUDENT BODIES

"SELECTIVELY OPEN"

CECILIA & TRANG

MOVED from CHINA to AUSTRALIA to ESCAPE PREJUDICE...

BUDI

I ARRIVED in MELBOURNE from JAKARTA ALREADY COMFORTABLE WITH WHO I AM...

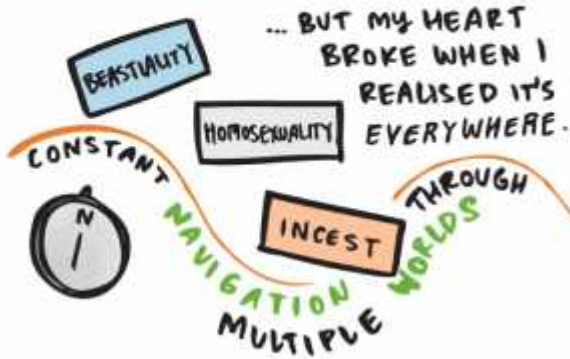
... BUT I RETREATED to the CLOSET for FEAR of JUDGEMENT from OTHER STUDENTS, PLUS

RECONCILING w- MY FAMILY.

SEXUAL ORIENTATION where it gets wonderfully MESSY.

GENDER IDENTITY 30 OPTIONS! IT'S COMPLICATED and INDIVIDUAL.

MARRIAGE EQUALITY MENTIONED A LOT in the SURVEY.





### 3 THOUGHTS on TRANS

TRANSEXUALITY - MORE EDUCATION & CONVERSATION

TRANSECTIONALITY - INDIVIDUAL COMPLEXITIES

TRANS-INSTITUTIONAL - WHAT CAN WE DO TOGETHER?

TAILOR MADE SUPPORT SYSTEMS.

CREATING safe SPACES...

... WE CAN FORGET HOW IT FEELS. REAL HELP. NOT A PAMPHLET.

WHAT WE CAN DO...

INCLUDE LGBTQI INFO in WELCOME PACKS

BUILD AWARENESS

SPELL IT OUT

EDUCATE. EMPOWER. CHALLENGE.

HOW CAN WE WORK TOGETHER MORE CLOSELY?

ALLIE NETWORKS

WHAT CAN I DO TO BE A BETTER ALLIE?



VISIBILITY

IS A BIG ISSUE



VIOLENCE

ENSURE STUDENTS KNOW they CAN CALL the POLICE, and HAVE MESSAGING FROM POLICE.

THERE IS NOTHING BINARY or SIMPLE ABOUT THIS