

INTERNATIONALISING ^{the} CURRICULUM to ENHANCE EMPLOYABILITY

 RELATIONSHIP MANAGEMENT

 VALUE PROPOSITION

 STUDENT EXPERIENCE

COLLABORATION AT L TU

2012 - 2015

40% GROWTH in SHORT PROGRAMS!

→ BUT few INTERNATIONALS

WHO SHOULD WE COLLABORATE with?



WHO ELSE is TALKING ABOUT international INTERNSHIP?



AND HOW CAN WE work TOGETHER?

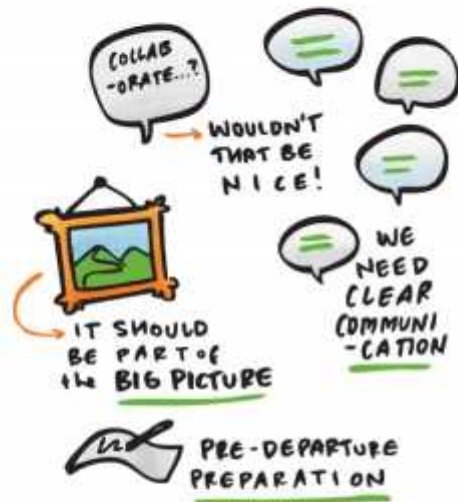
 ISSUES, eg.
→ CREDITS
→ SELF SOURCING

 HOW ARE we PROMOTING TO OUR STUDENTS?

e.g.  #1 MORE OPPORTUNITIES IN A COMPETITIVE ENVIRONMENT.



RELATIONSHIP MANAGEMENT

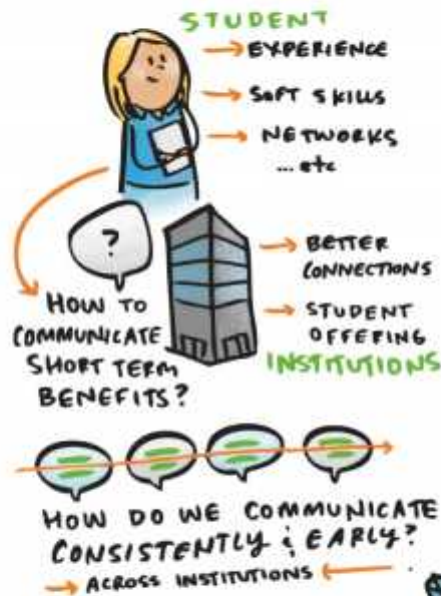


CONSIDER INTERNATIONAL INTERNSHIP from an INDIGENOUS PERSPECTIVE

(REF. SWINBURNE PROGRAM)



VALUE PROPOSITION



COMMUNICATING MUTUALLY BENEFICIAL



STUDENT EXPERIENCE



VETTING PARTNERS

- QUALITY?
- OUTCOMES?
- ACCOMMODATION?
- PRE-WORK? "CULTURAL DIFFERENCES"
- HOW ARE 3RD PARTY PROVIDERS DOING IT?
- PAYMENT?