

ADVENTURER EXPLORER TRAILBLAZER REBEL PIONEER CREATOR DEFENDER ADVENTURER EXPLORER TRAILBLAZER
REBEL PIONEER CREATOR DEFENDER ADVENTURER EXPLORER TRAILBLAZER REBEL PIONEER CREATOR DEFENDER ADVENTURER EXPLORER TRAILBLAZER REBEL PIONEER CREATOR DEFENDER

Using data to shape internationalisation strategies: Lessons learned from Canadian universities

Rhonda Friesen

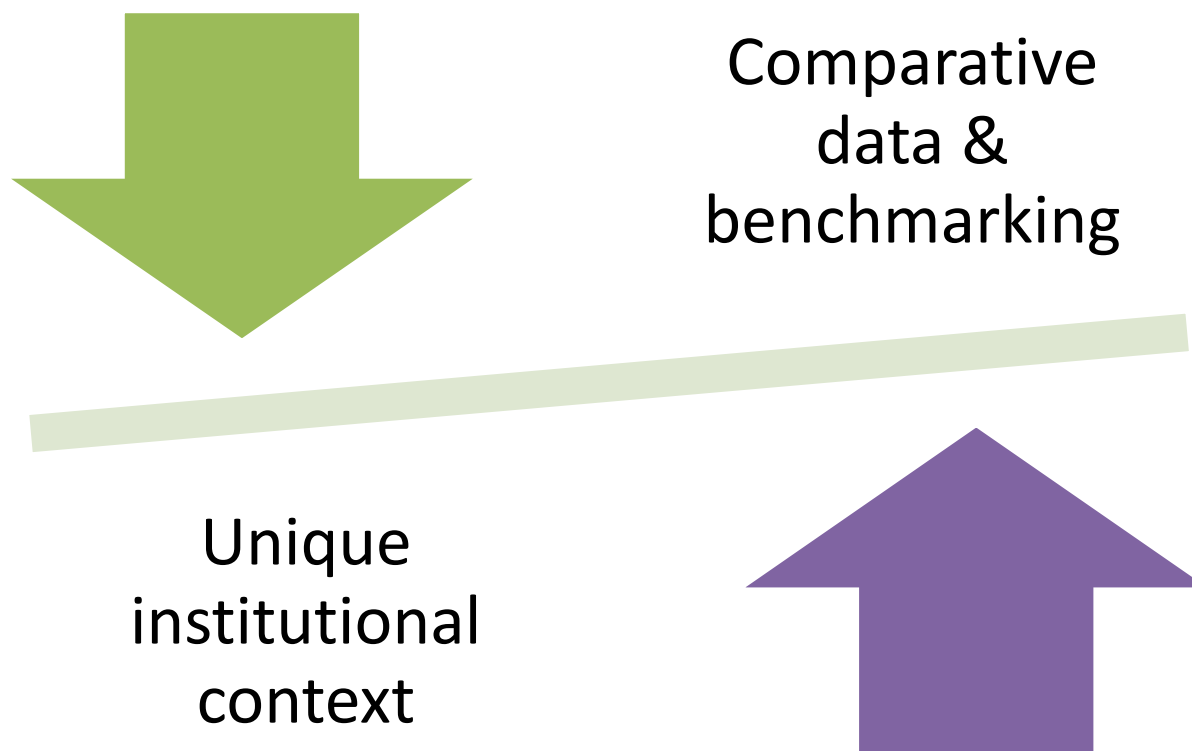
AIEC Presentation

Adelaide, SA October 8, 2015



UNIVERSITY
OF MANITOBA

What impact does national data have on individual institutions?

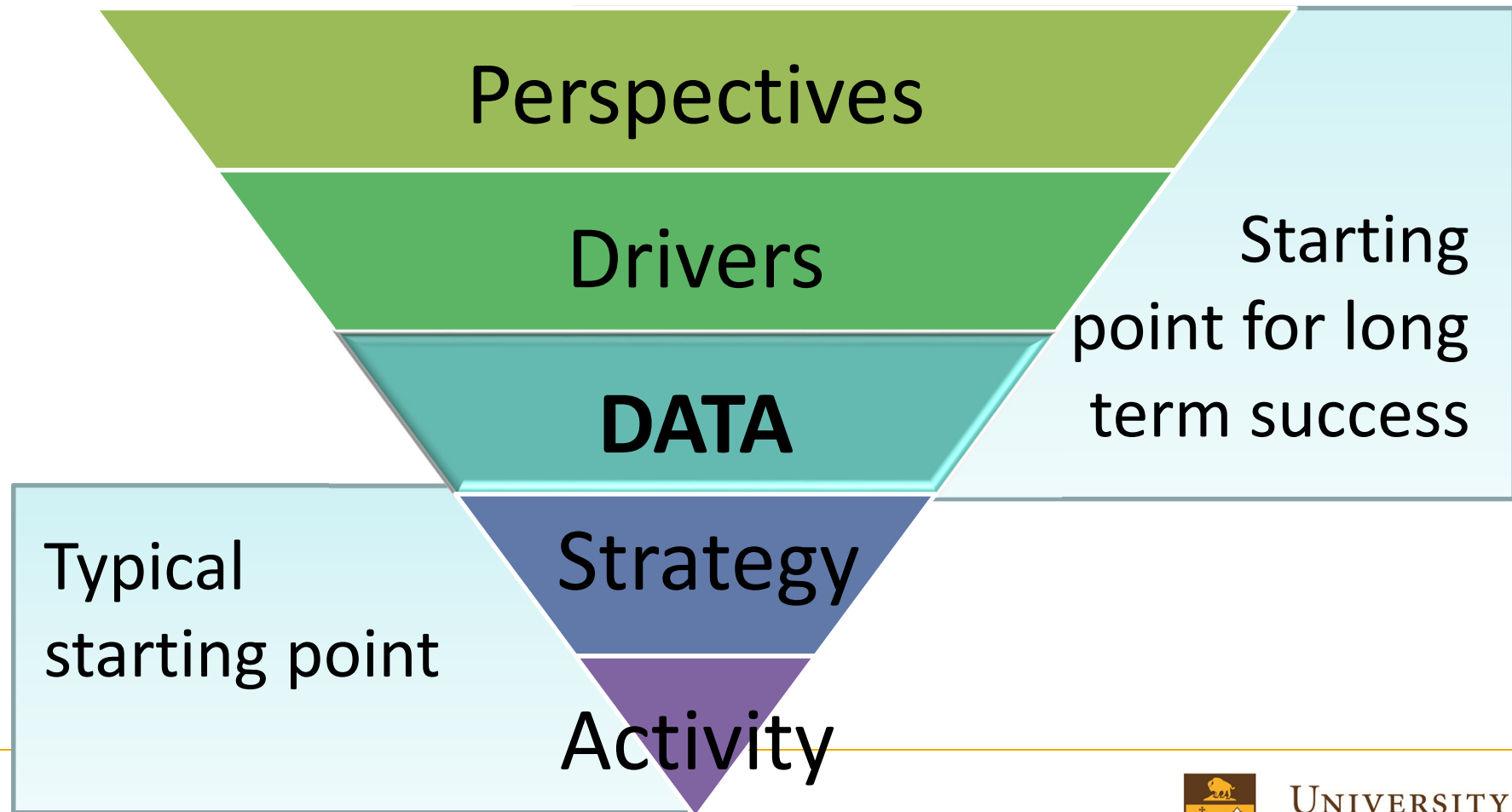


1. Situates institution in an appropriate & realistic context

- Confirms & challenges our targets and goals
- Informs strategic planning based on broader perspective
- Enables better understanding of unique institutional strategy



Building a strategy based on diverse perspectives and reliable data



Faculty perspectives from the UofM

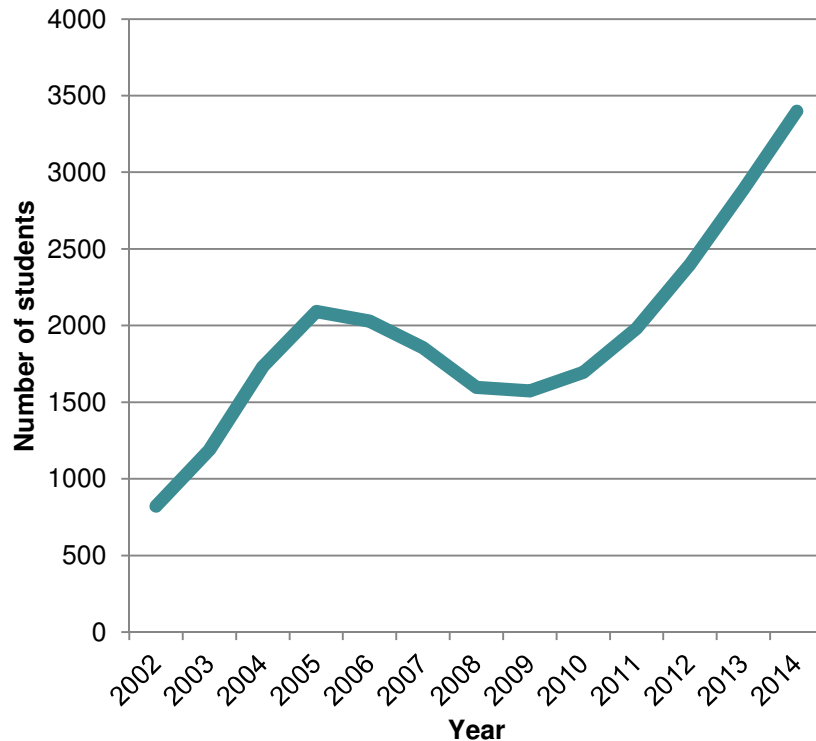
- 69% felt their own international work improves the quality of their teaching, research
- 82% of respondents felt international students bring diverse and enriching perspectives to the classroom
- 71% found international students have communication difficulty, creating challenges/additional support
- 60% of respondents felt that international experience at the undergraduate level was not important or only somewhat important; Importance at the graduate level increased



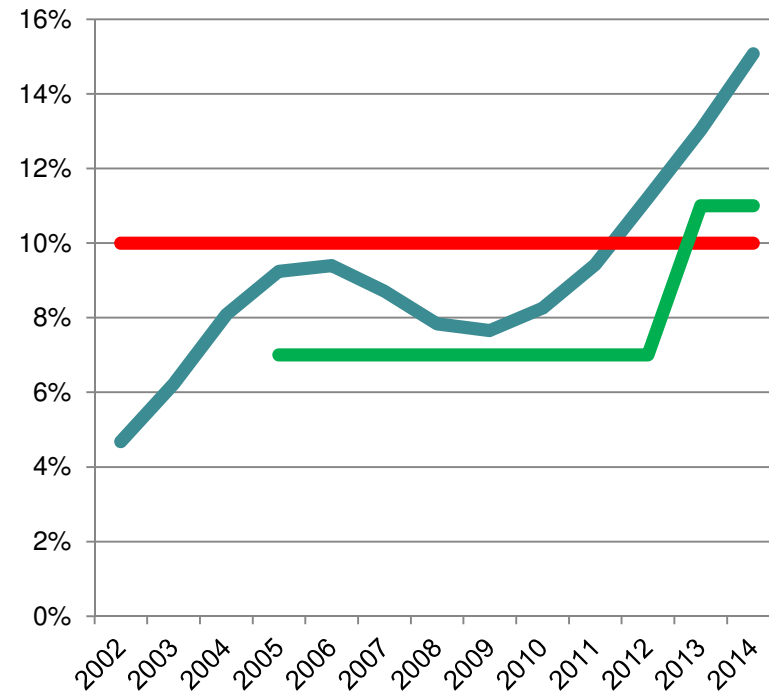
Inbound student mobility

Goal: By 2018 international students should account for 10% of undergraduate enrolment

International Students in UManitoba Degree Programs



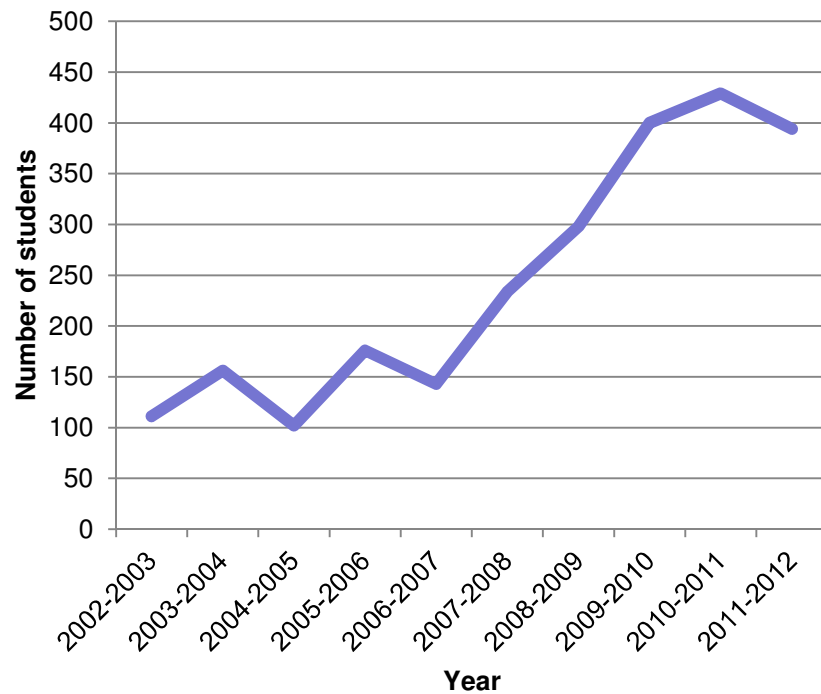
International students at UM as % of student population



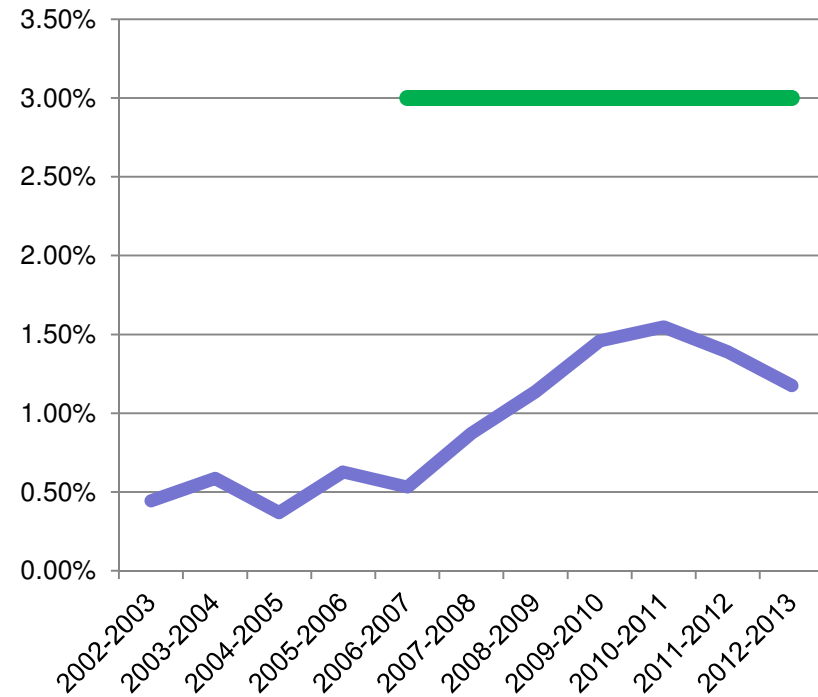
Out bound student mobility

Goal: Increase opportunities for experiential learning

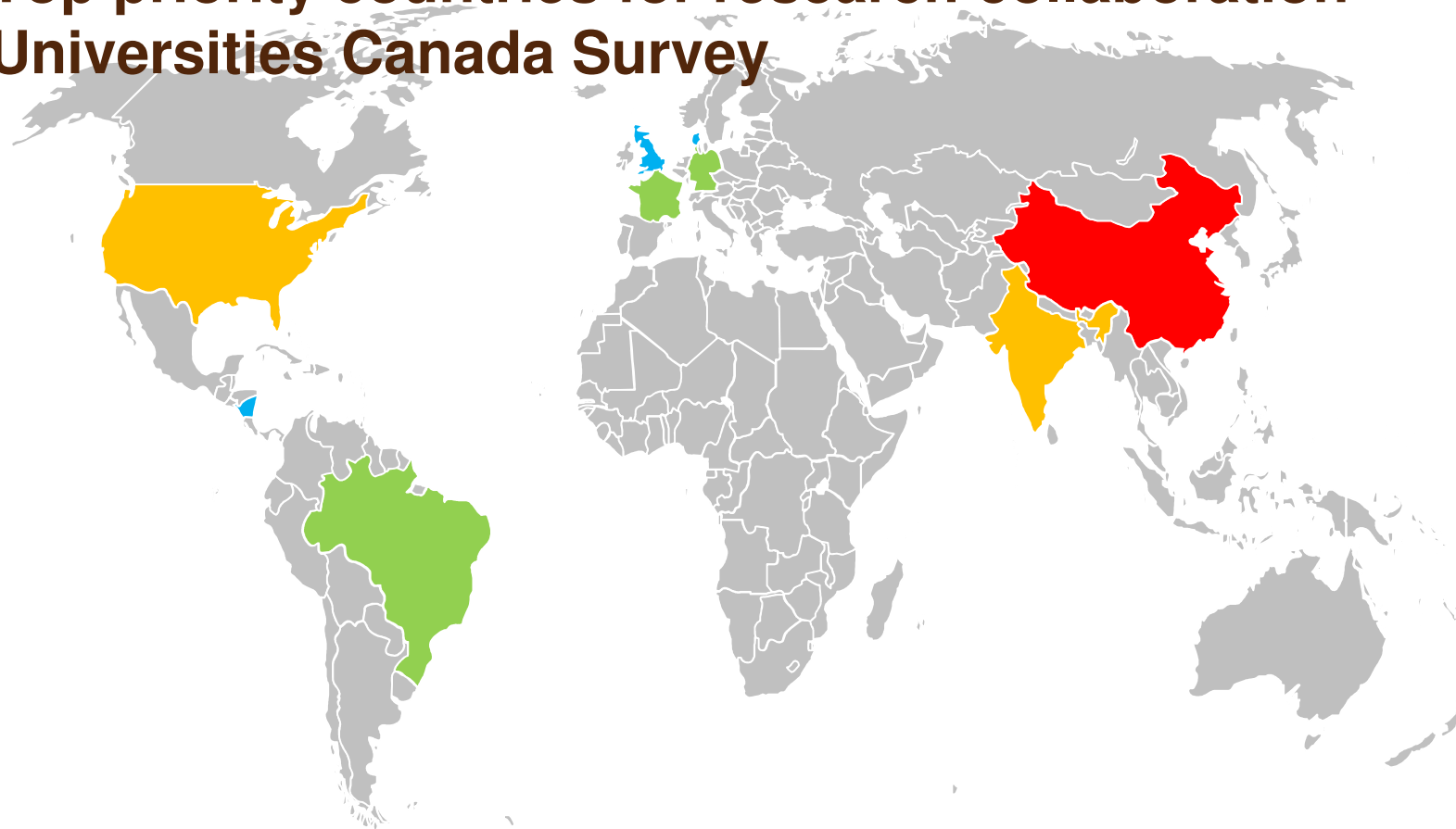
UManitoba students in international programs - Outbound



Out bound students as % of student population

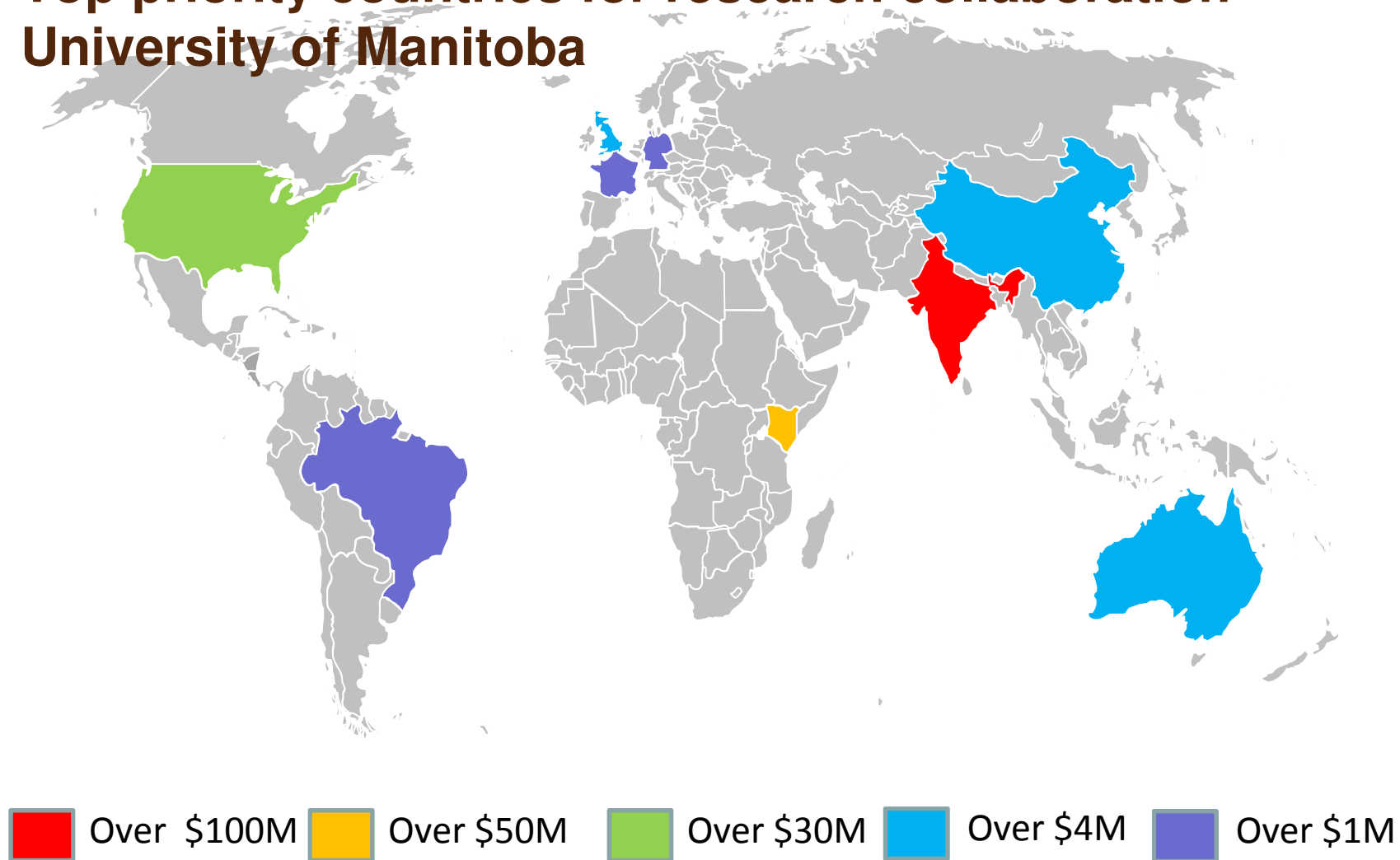


Top priority countries for research collaboration – Universities Canada Survey

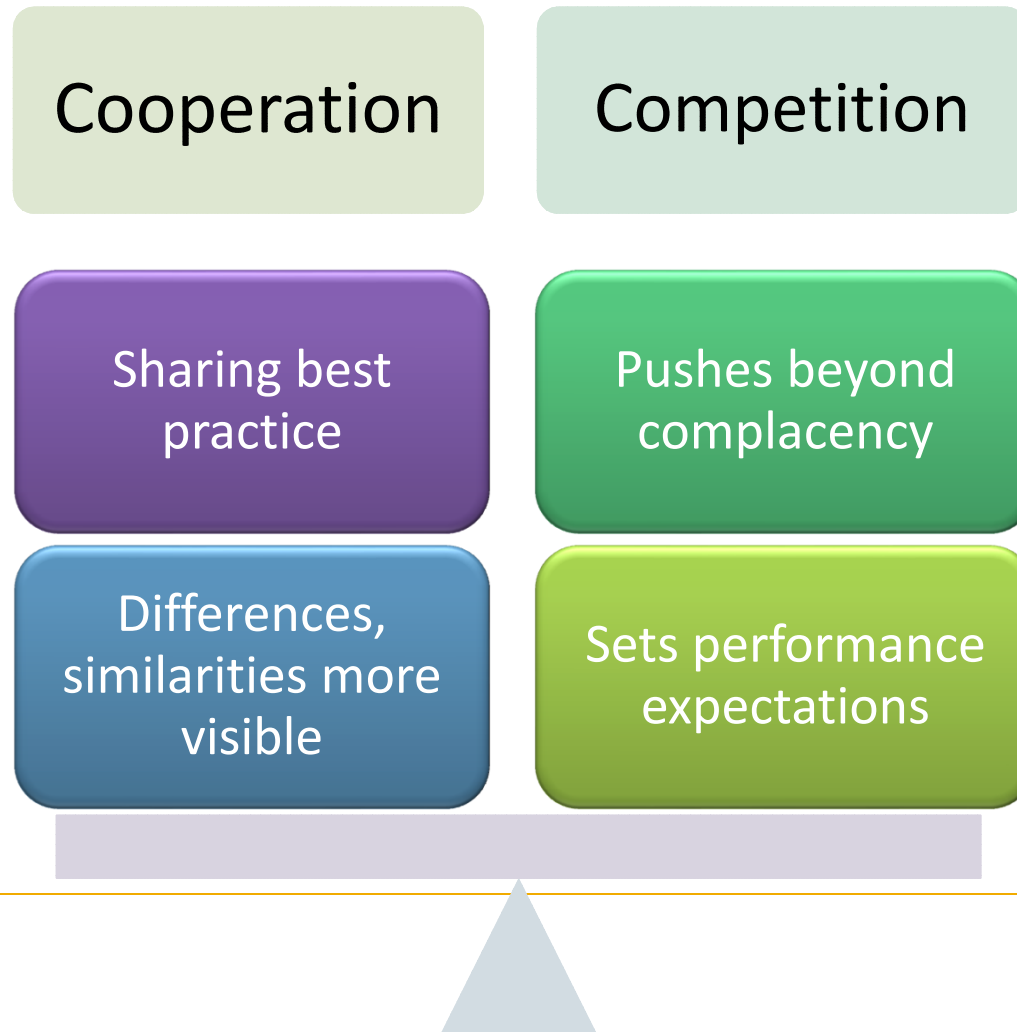


Over 80% Over 60% Over 50% Over 40%

Top priority countries for research collaboration – University of Manitoba

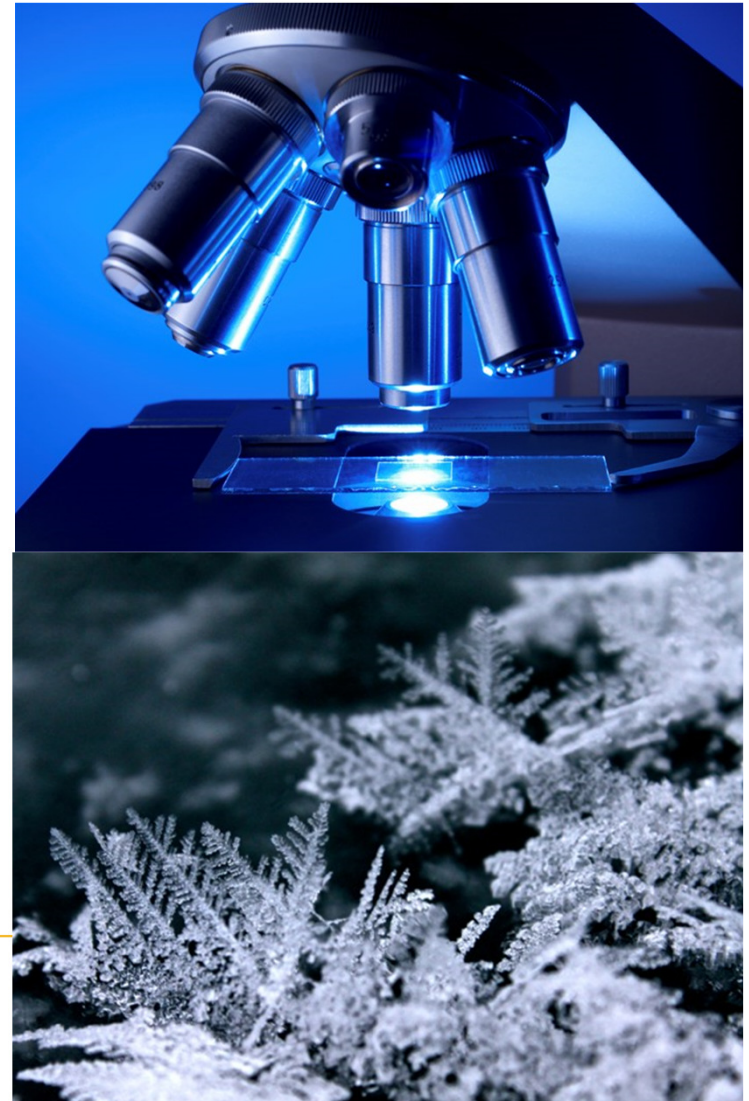


2. Impact of internationalization data: Promotes cooperation and competition



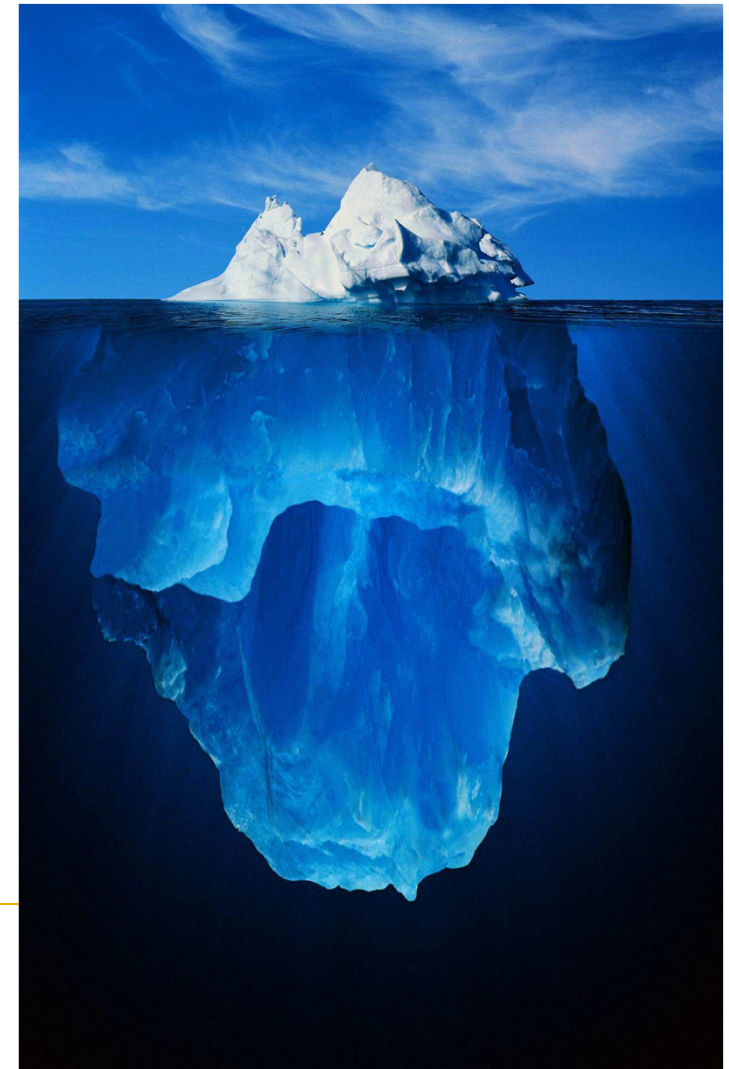
3. Provides grounds for critical thinking & analysis

- Points out gaps and assumptions
 - Challenges current structures, systems, processes
 - Illuminates the ugly and the good
 - Engages faculty
-

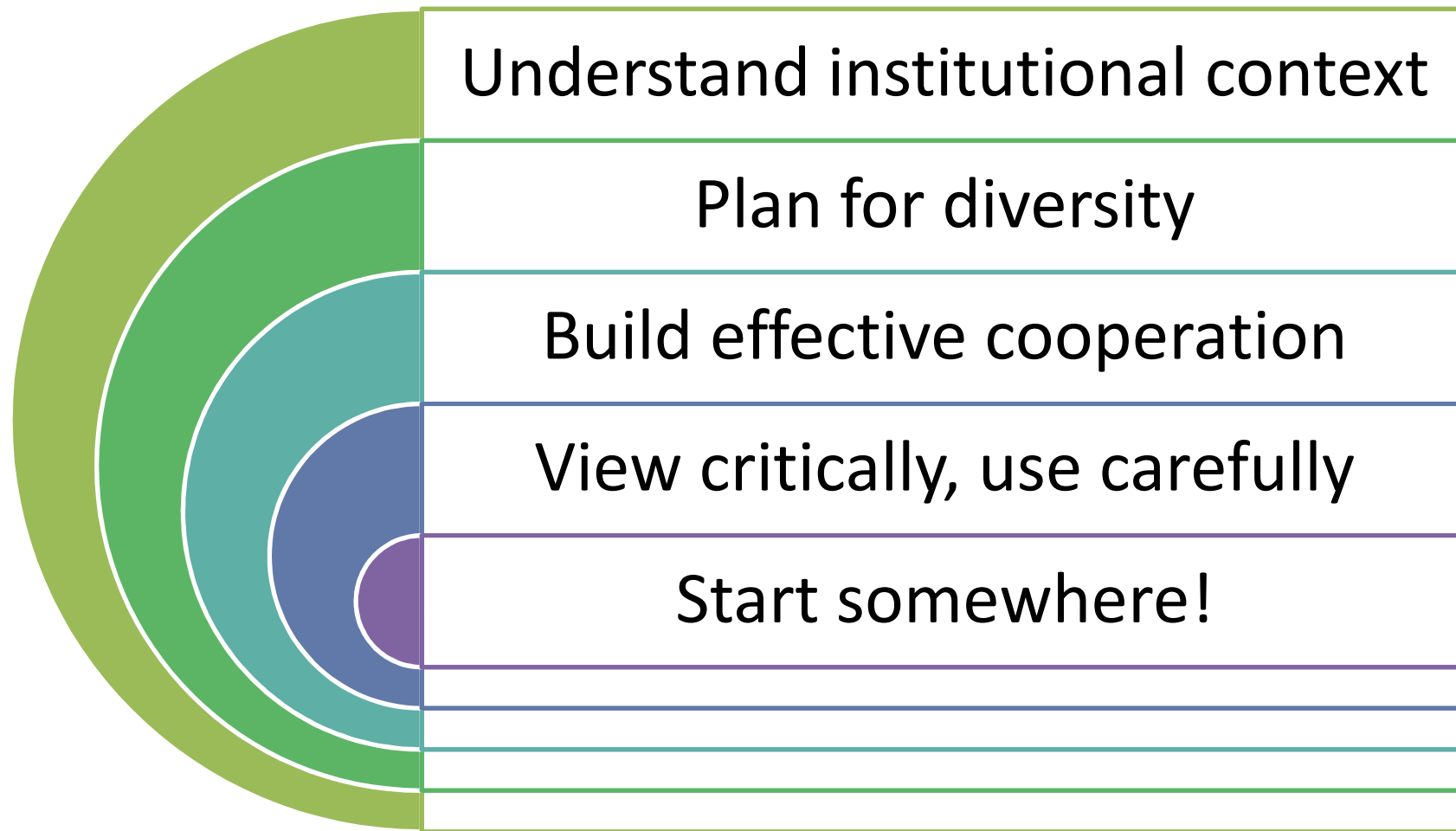


Remembering data limitations

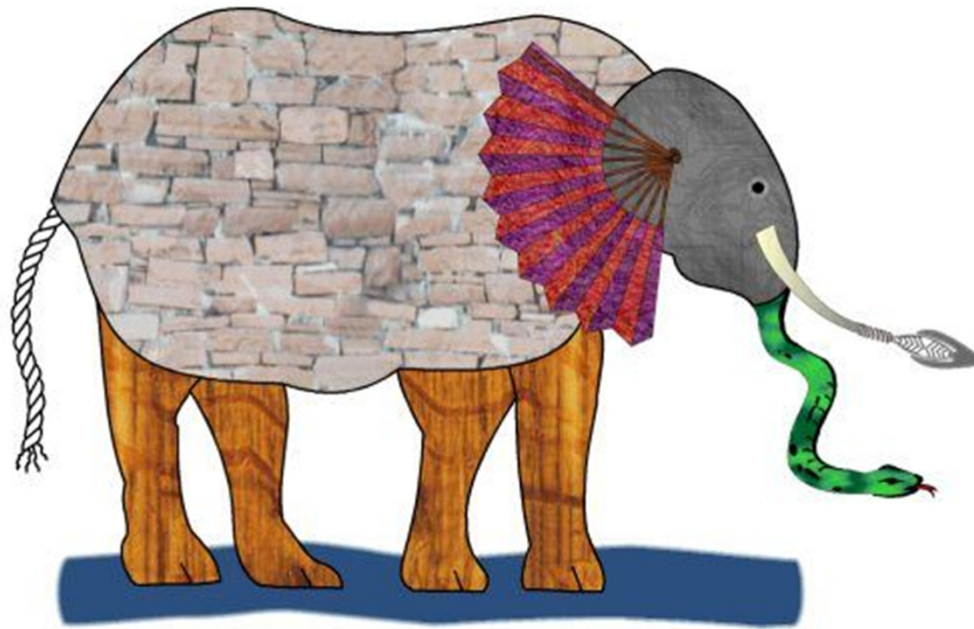
- Does it tell the 'complete' story?
 - Does it tell a 'relevant' story?
 - What conclusions can it reasonably draw?
 - What assumption does it expose?
-



In summary: Using data to shape strategy



**What 'internationalisation' looks like....
Depends on your perspective**



Thank you!



EXPLORER INNOVATOR ADV
REBEL ADVENTURER TRAILBLAZER
INNOVATOR CHALLENGER REBEL VISIONARY
REBEL PIONEER CREATOR EXPLORER TRAILBLAZER INNOVATOR
ADVENTURER EXPLORER ADVENTURER TRAILBLAZER REBEL PIONEER CREATOR EXPLORER REBEL PIONEER
PIONEER CREATOR EXPLORER DEFENDER TRAILBLAZER REBEL PIONEER EXPLORER ADVENTURER TRAILBLAZER REBEL EXPLORER PIONEER DEFENDER TRAILBLAZER CREATOR



UNIVERSITY
OF MANITOBA