

# MONASH ARTS GLOBAL IMMERSION GUARANTEE

A QUESTION OF SCALE & IMPACT

# THE MONASH ARTS COMMITMENT TO INTERNATIONAL EDUCATION:

INTERCULTURAL  
COMPETENCY

GLOBAL  
OUTLOOK

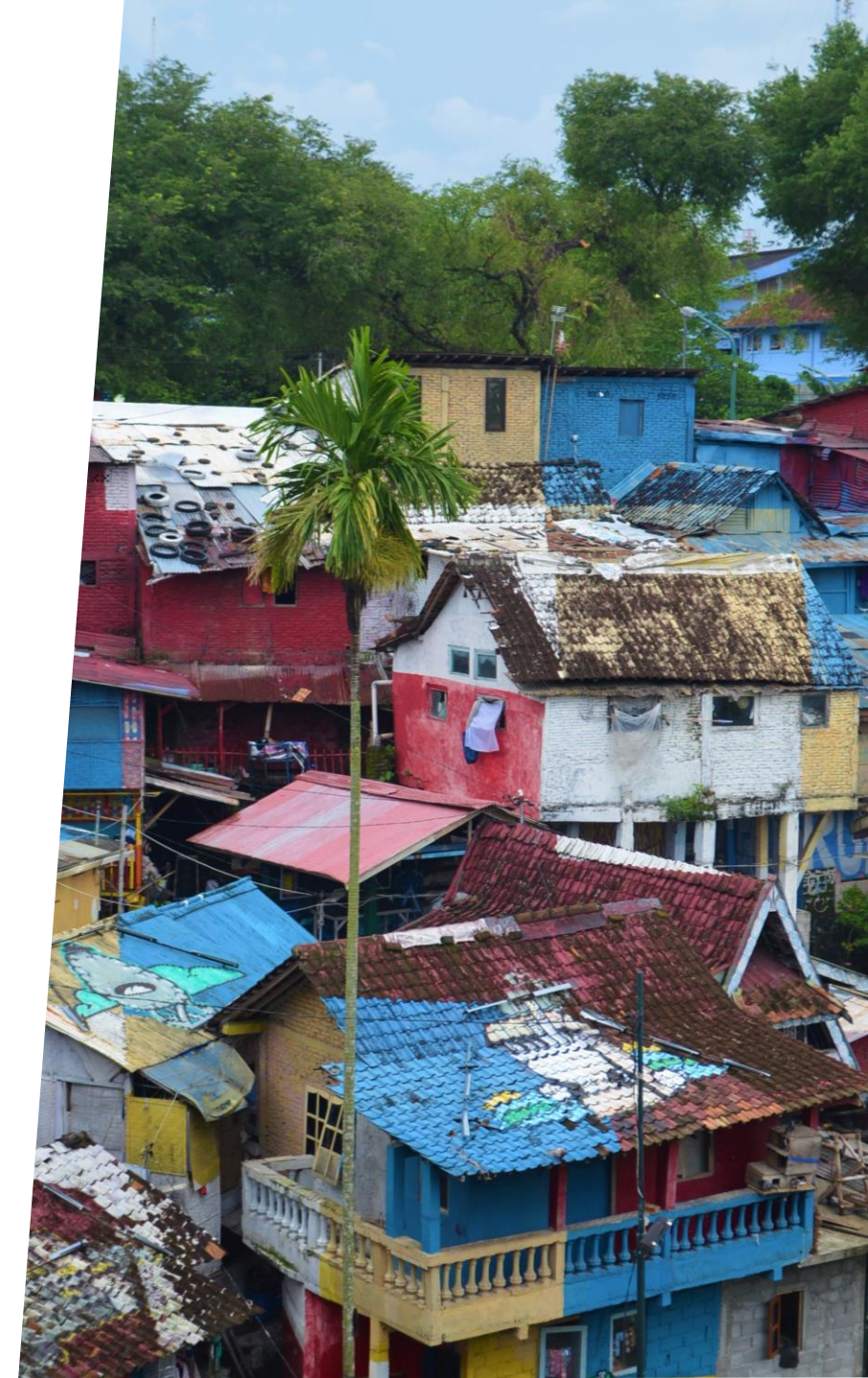
CREATIVITY &  
INNOVATION

WORK-READY  
SKILLS

DISCIPLINE  
SPECIALISATION

CORE DOMAINS

GLOBAL IMMERSION EXPERIENCE



# WHAT WE KNOW: KNOWN BARRIERS FOR STUDY ABROAD PROGRAMS

Known barriers to undertaking international study programs:

- Funding
- Lack of knowledge about available opportunities
- Fear of isolation
- Lack of relevant opportunities
- Possible negative impacts on degree



# THE MONASH ARTS GLOBAL IMMERSION GUARANTEE

A transformative **guaranteed, funded** overseas experience for every first year Bachelor of Arts, Bachelor of Global Studies & associated double degree students.

Students can go to India, Indonesia, Italy, Malaysia and China.



ACCESSIBLE

INCLUSIVE



TRANSFORMATIVE



DEVELOPS GLOBAL LEADERS

# THROUGH SOLUTION FOCUSED STUDY



Students are placed at the intersection between the **environment, society & technology**



They **engage with local leaders** to gain hands-on experience with innovative & sustainable solutions to some of the worlds biggest challenges.



They are **pushed out of their comfort zone**, to apply theoretical knowledge to real world, local contexts.

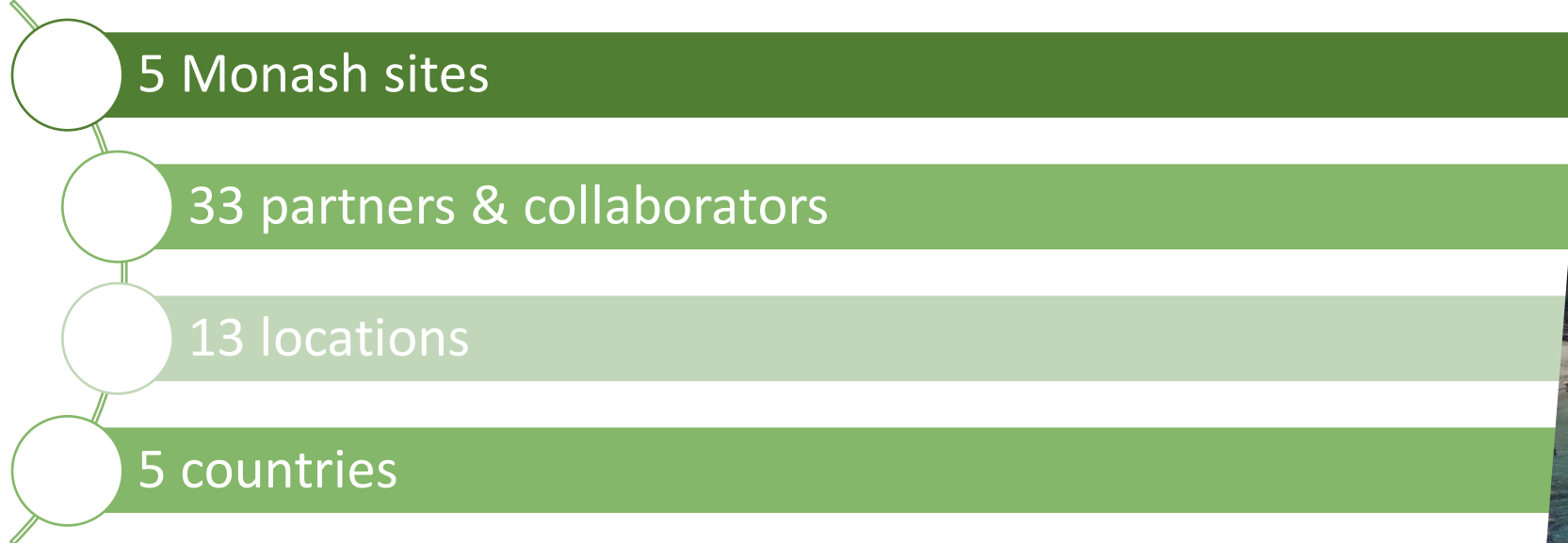


Goes beyond educational experiences, students engage with other young people through sports & social activities to **build life-long friendships & future professional networks.**

## THE MONASH ARTS

# GLOBAL FOOTPRINT

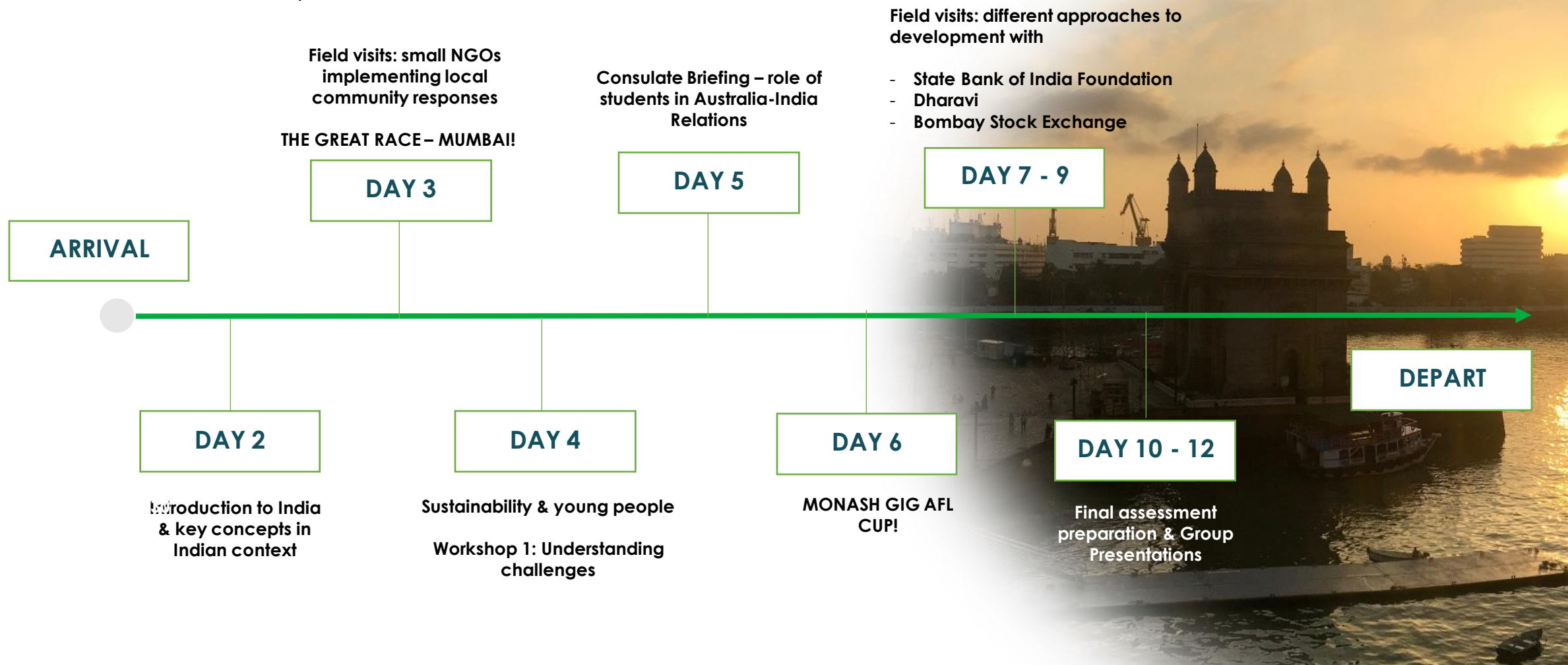
We can deliver this at scale as a result of our global network.



GIG creates a platform for stronger relationships between private businesses, social enterprises, NGO's, government and universities.



# CASE STUDY: MUMBAI, INDIA



# DESIGNED TO HAVE IMPACT

## STUDENTS

Remove barriers to international study

Improved educational outcomes

Increased graduate employment outcomes

Developed regional and global networks

## THE UNIVERSITY

Increase in low-SES graduates with international experience

Established best practice in international mobility programs

Expansion of public and private linkages to expand GIG program

Highly engaged global alumni network

## LOCAL PARTNERS & COMMUNITY

Opportunity to scale core focus or business

Long-term, mutually beneficial partnerships established

Shared contribution to a culturally sensitive, globally focused graduate workforce

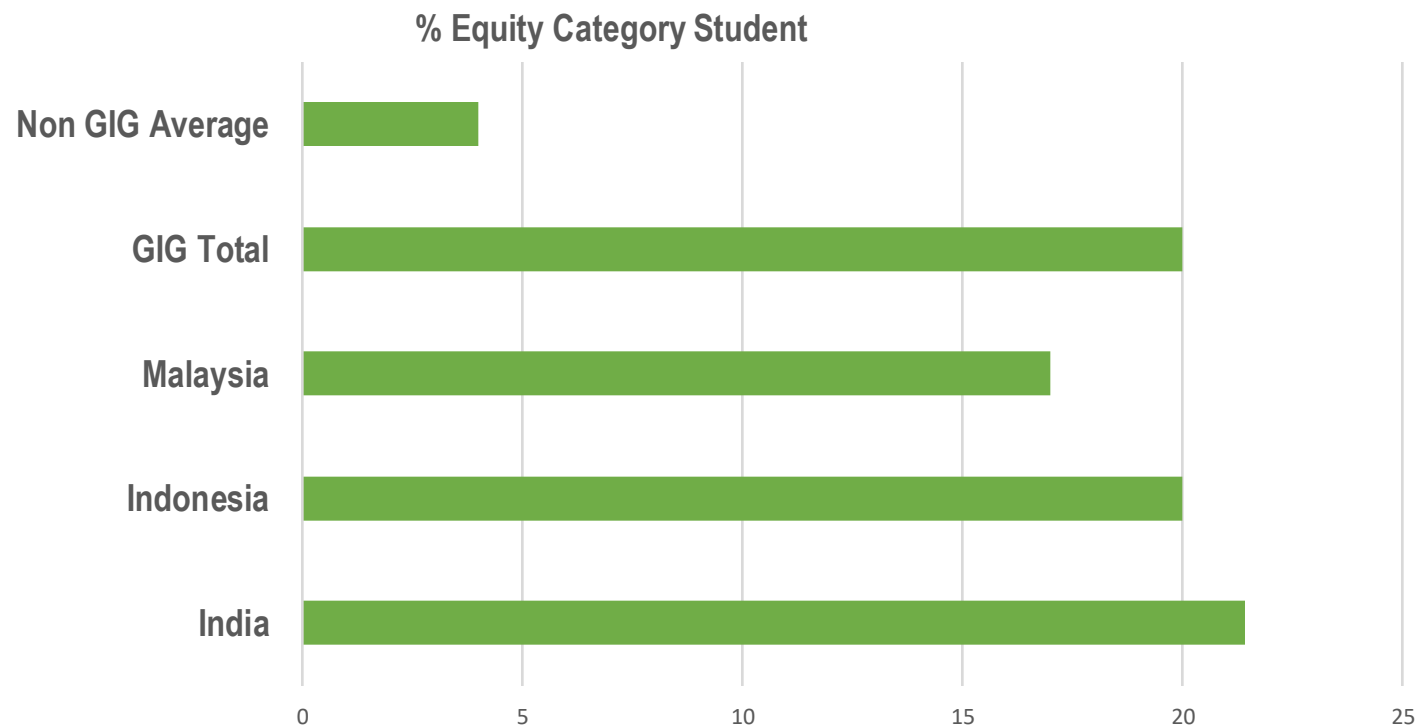
Global and regional exposure through online social media and in-country media coverage





# DESIGNED TO BE ACCESSIBLE

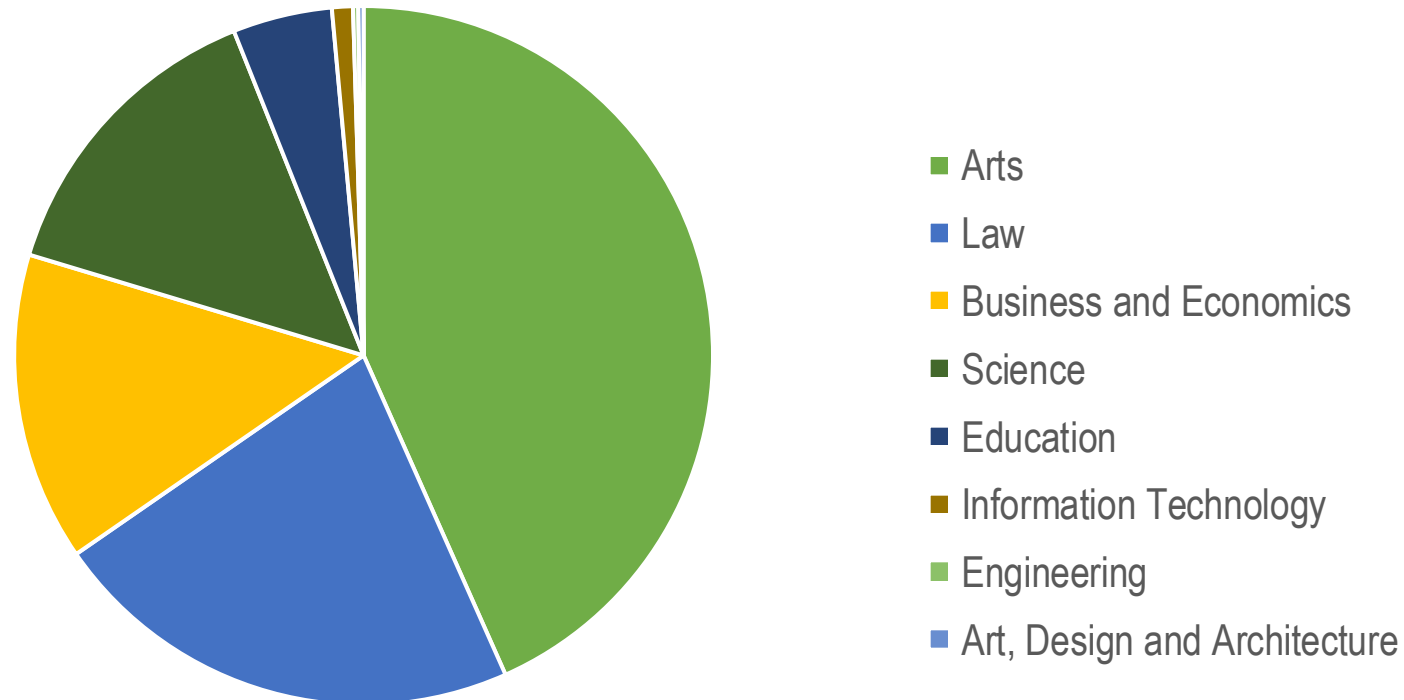
Provides the opportunity for *all* students to have an international study experience, regardless of their financial means



# DESIGNED TO CROSS STEM/HASS BOUNDARIES

Through our double degree programs, the GIG enables students from across the university to transcend STEM/HASS boundaries.

Students by Faculty



# DESIGNED TO BE TRANSFORMATIVE

*'It is the best thing I have ever done', Ash Ratten, Bachelor of Arts and Bachelor of Science*

*'It has motivated us all to aspire to create change in our careers', Gemma Crosby, Bachelor of Global Studies and Bachelor of Science*

*'Monash funds [pretty much] the entire trip. If it wasn't for the GIG program I might not have had such an opportunity for a very long time and I think that is so important and I am so grateful for it. I encourage everyone that is in a similar situation to me, that haven't had means to travel to jump on the program', Jasmine Vermeer, Bachelor of Arts.*



FOLLOWING PROGRAM ONE:

# THIS IS WHAT WE LEARNT

## ACADEMIC FOCUS

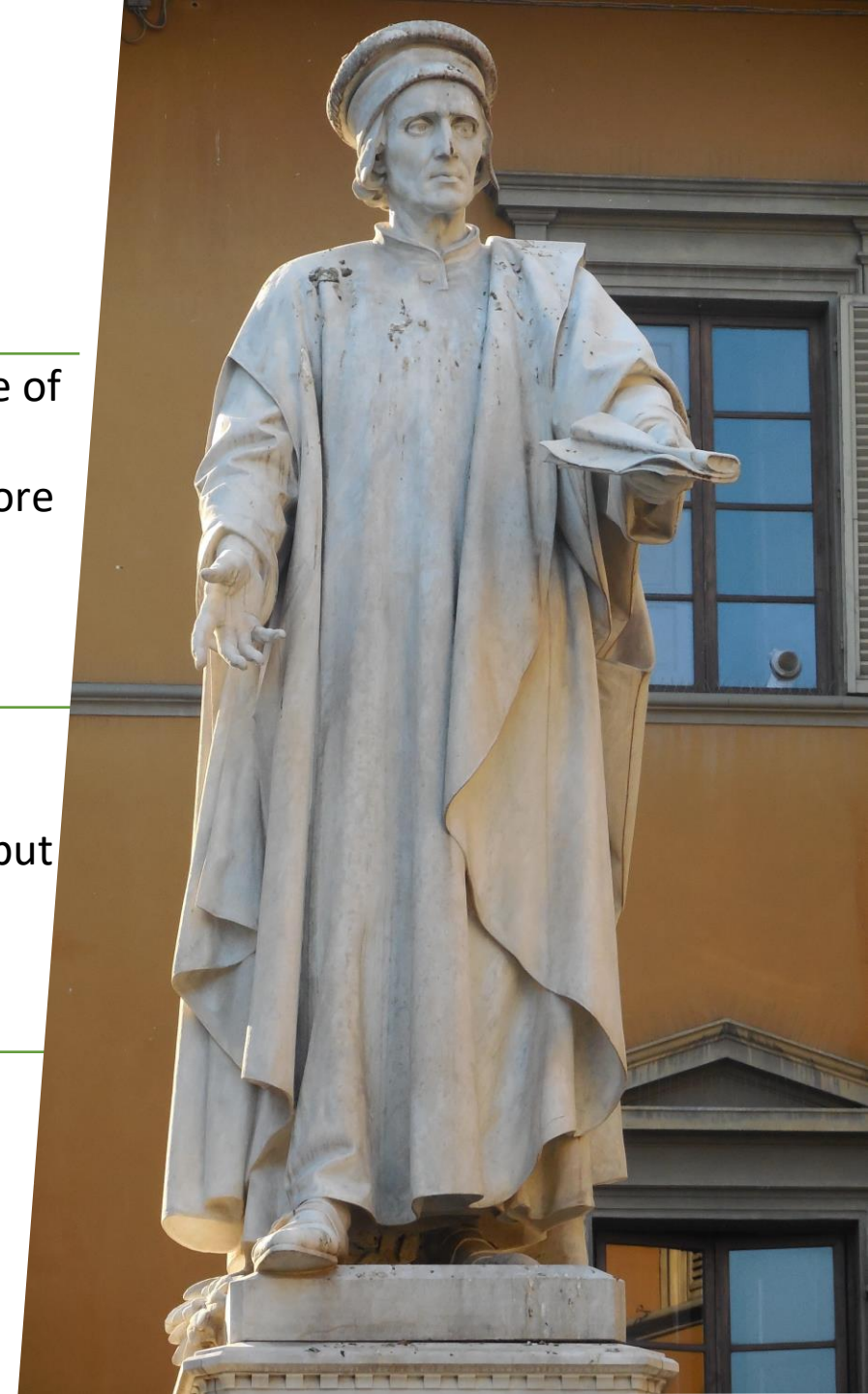
- Provide more frameworks and tools focused on solutions pre-departure – the sale of local challenges can be overwhelming
- Increase the amount of assessment and pre-departure work to ensure there is more time to be completely immersed while abroad

## IN-COUNTRY PROGRAM

- Scale back the pace and number of academic activities to provide more time to interpret and understand their experiences
- Balance the field site visits to ensure that students see local solutions first-hand, but can also see the pathway to returning to live and work

## PRACTICALITIES

- Partnerships are the foundation of the entire program
- Logistics need to be flexible and opportunistic
- Finance are not the only barrier



**And here is what the students have said...**



## For more information:

Dr. Cecilia Hewlett, Associate Dean International  
email: [Cecilia.Hewlett@monash.edu](mailto:Cecilia.Hewlett@monash.edu)

Dr. Bodean Hedwards, Manager:  
email: [Bodean.Hedwards@monash.edu](mailto:Bodean.Hedwards@monash.edu)